



Maldives

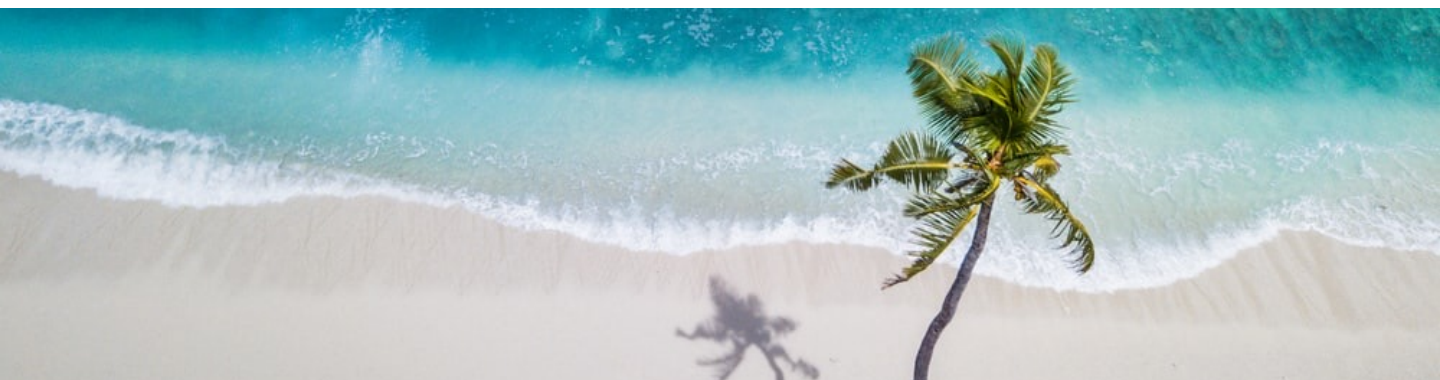
immersion
INDIA™
OUTBOUND

OCEANOLOGY + ECOLOGY

The future of the Maldives and its people are entirely reliant on the protection of their marine and coastal environment. Yet, overfishing, excessive tourism, pollution and coastal development are degrading the country's reefs, seagrass and mangroves and these habitats are losing their capacity to support the people who depend on them.

THE MALDIVES REEF ECOSYSTEM IS THE SEVENTH LARGEST IN THE WORLD AND THE FIFTH MOST BIODIVERSE.

MALDIVES IS THE FLATTEST COUNTRY ON EARTH, WITH AN AVERAGE ALTITUDE OF 1.5 M FROM SEA LEVEL.



The Maldives Whale Shark Research Programme (MWSRP) is a charity that carries out whale shark research and fosters community focused conservation initiatives in the Maldives.

Blue Marine Foundation (BLUE) is a charity dedicated to restoring the ocean to health by addressing overfishing, one of the world's biggest environmental problems.



**BLUE MARINE
FOUNDATION**

EXPERIENCE THE UNIQUE MARINE ENVIRONMENT OF MALDIVES

Light a spark in the minds of young students and to help them understand not just the brilliance of the underwater world but how important it is for them – and all of us – to be mindful of and active in marine conservation.

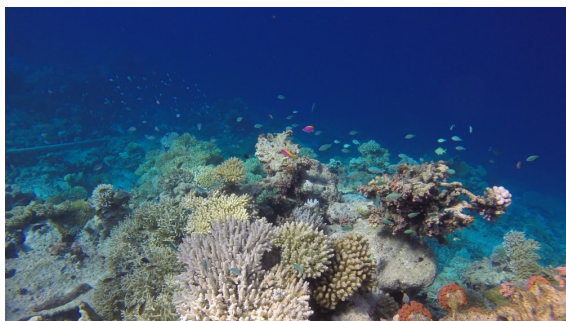
Students to explore and learn about coral reefs, mangroves, marine life whilst also learning the threats faced due to climate change.

Understanding Interconnectedness – the economy, people, culture, marine life, and environment – and that local community involvement is central to successful conservation initiatives.

Getting students directly involved and excited in conservation, this can create networks of involved citizens, ready to participate in stimulating scientific research and conservation projects related to the ocean and ecology.



TRAVEL HIGHLIGHTS



Understanding intrinsic value of coral reefs

Aquatic exploration



Sessions by a local biologist

Workshops aimed at sharing knowledge on conserving this fragile ecosystem.



Cultural Interaction with Local Maldivian People

Understanding their vital importance to the Earth and its marine life



PROGRAM SCHEDULE

7 Days Program

DAY
1

Arrival, meet & greet at the airport,
transfer to the island at the afternoon.
Island tour, dinner

DAY
2

Lecture on coral reefs and Maldives
specific geography , house reef
snorkeling lesson with the guide.

DAY
3

Manta snorkeling trip half day /
afternoon free time

DAY
4

MWSR offline workshop + whale shark
boat trip full day

DAY
5

Discover scuba dive morning /
afternoon 2 groups

DAY
6

Reef ecology and specifics for
Maldives resilient reefs lecture ,
afternoon desert island trip

DAY
7

Departure



FINE DETAILS

A minimum of 10 students and maximum group size of 14.

Inclusions

- International Round Trip Airfare, Insurance & Visa*
- Meet & greet at the airport
- Return transfer via public speed boat (1.hr 30 min from / to Male Int Airport) *scheduled times
- Twin shared accommodation
- Full board meal plan (breakfast, lunch, dinner); coffee / tea / water unlimited
- Activities : guided snorkeling lessons from the shore , from the boat including night snorkeling; full day boat trip whale shark / manta snorkeling; 1 x discover scuba dive; deserted island trip
- Lectures : by Marine conservation NGO's
- Snorkeling set for the trip
- Diving equipment

Exclusions

- Personal transportation fees,
- Personal expenses such as telephone bills, personal sight-seeing trips, snacks and water, lock replacement, damages to housing, Medical expenses.

Cancellation Policy

- Participants may withdraw from Program without penalty between the Effective Date and 25 days prior to the start of Program, provided that the minimum of 8 Participants, per group remain. In this case, a partial refund (Airline Cancellation Policy applies) of the relevant program cost per participant will be given.
- If Participants cancel within 25 days prior to the start of either Program and have a medical reason which precludes participation in the full program, provided that a minimum of 8 Participants per group remain, a partial refund of the relevant program cost per participant.
- No refunds will be given for Participants who withdraw within 25 days prior to the start of the program

immersion **INDIA**™ OUTBOUND

